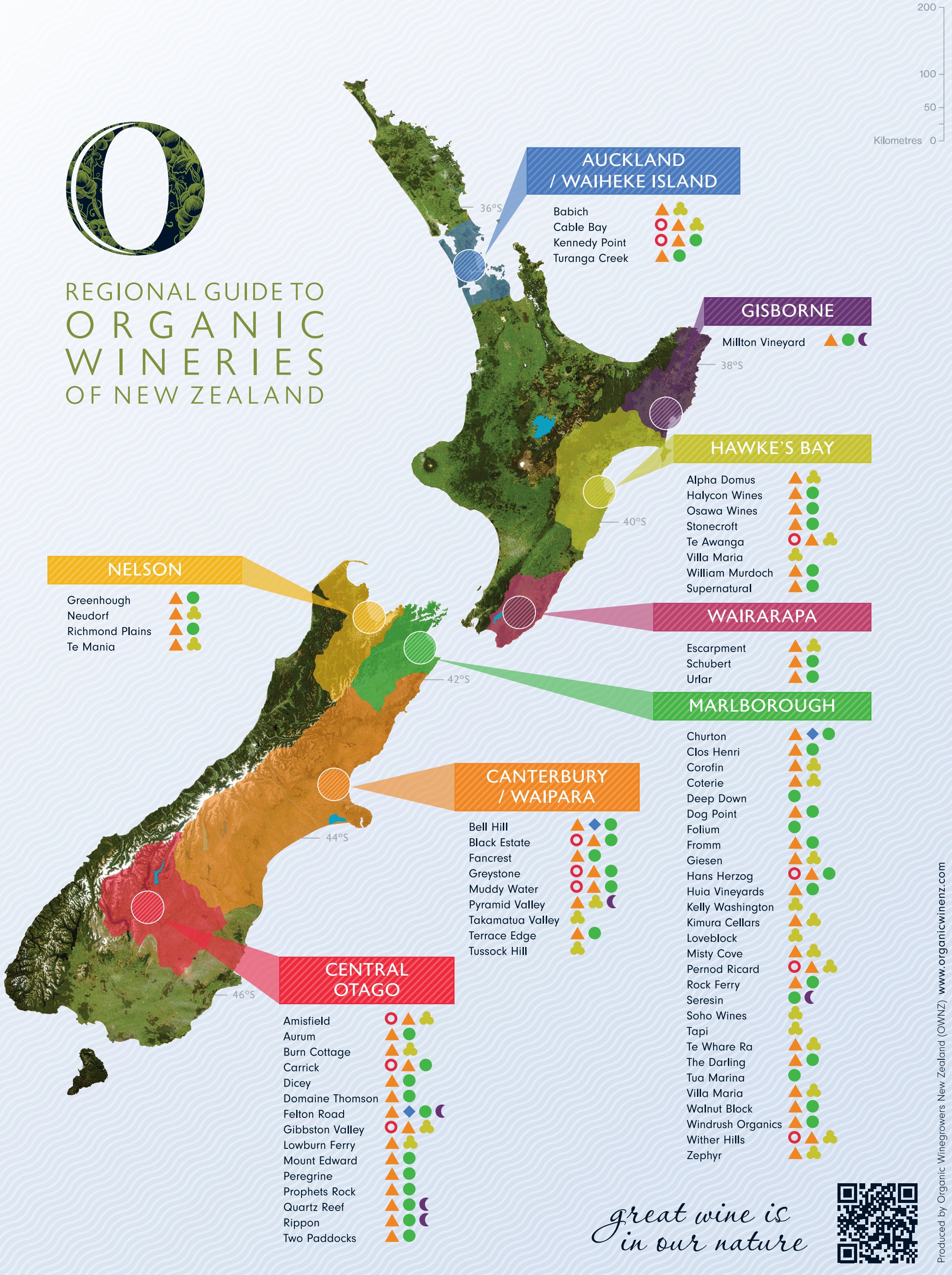


REGIONAL GUIDE TO ORGANIC WINERIES OF NEW ZEALAND



AUCKLAND / WAIHEKE ISLAND

- Babich
- Cable Bay
- Kennedy Point
- Turanga Creek



GISBORNE

- Milton Vineyard



HAWKE'S BAY

- Alpha Domus
- Halycon Wines
- Osawa Wines
- Stonecroft
- Te Awanga
- Villa Maria
- William Murdoch
- Supernatural



NELSON

- Greenhough
- Neudorf
- Richmond Plains
- Te Mania



WAIRARAPA

- Escarpment
- Schubert
- Urlar



MARLBOROUGH

- Churton
- Clos Henri
- Corofin
- Coterie
- Deep Down
- Dog Point
- Folium
- Fromm
- Giesen
- Hans Herzog
- Huia Vineyards
- Kelly Washington
- Kimura Cellars
- Loveblock
- Misty Cove
- Pernod Ricard
- Rock Ferry
- Seresin
- Soho Wines
- Tapi
- Te Whare Ra
- The Darling
- Tua Marina
- Villa Maria
- Walnut Block
- Windrush Organics
- Wither Hills
- Zephyr



CANTERBURY / WAIPARA

- Bell Hill
- Black Estate
- Fancrest
- Greystone
- Muddy Water
- Pyramid Valley
- Takamatua Valley
- Terrace Edge
- Tussock Hill



CENTRAL OTAGO

- Amisfield
- Aurum
- Burn Cottage
- Carrick
- Dicey
- Domaine Thomson
- Felton Road
- Gibbston Valley
- Lowburn Ferry
- Mount Edward
- Peregrine
- Prophets Rock
- Quartz Reef
- Rippon
- Two Paddocks



great wine is in our nature



102

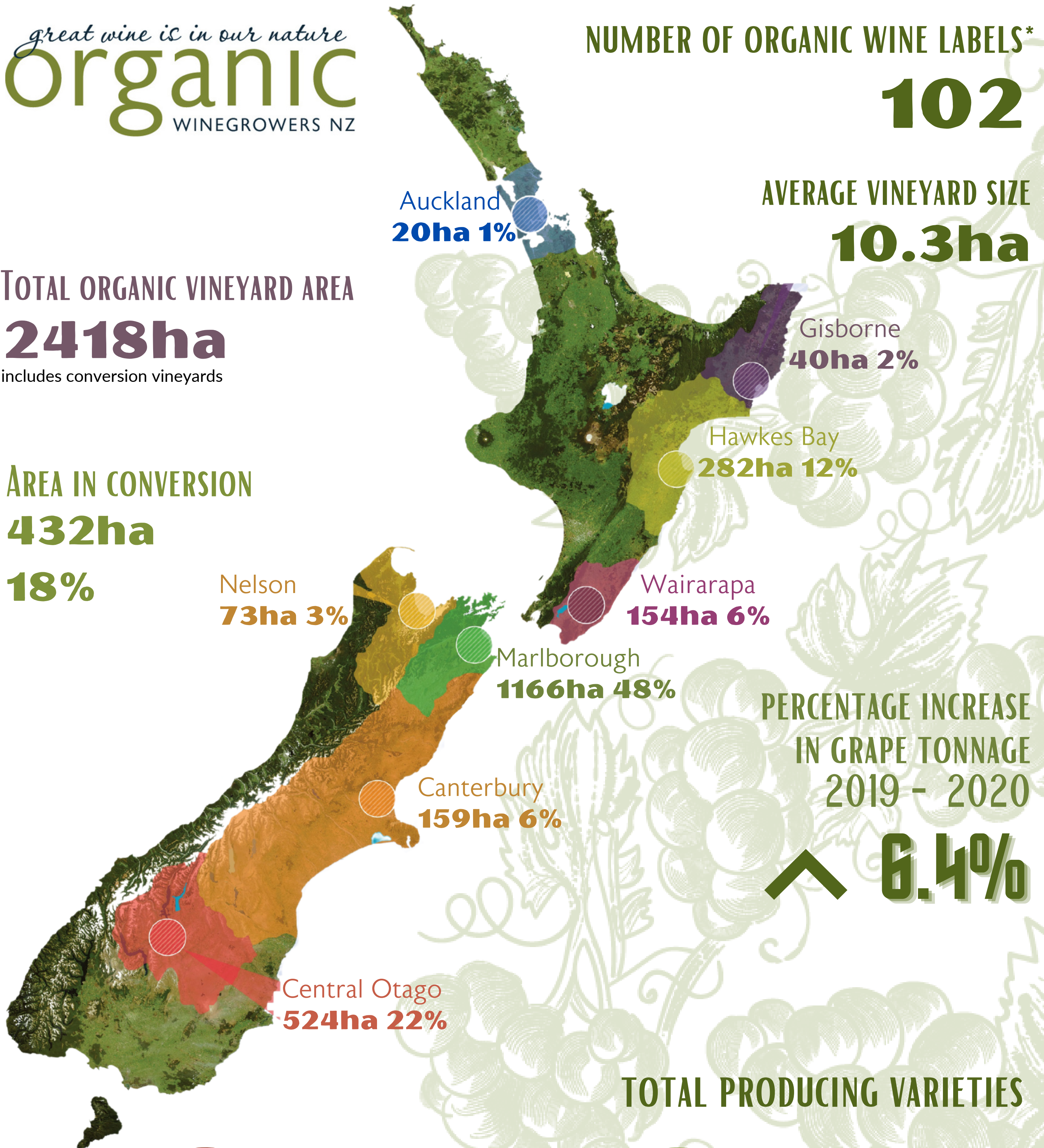
10.3ha

2418ha

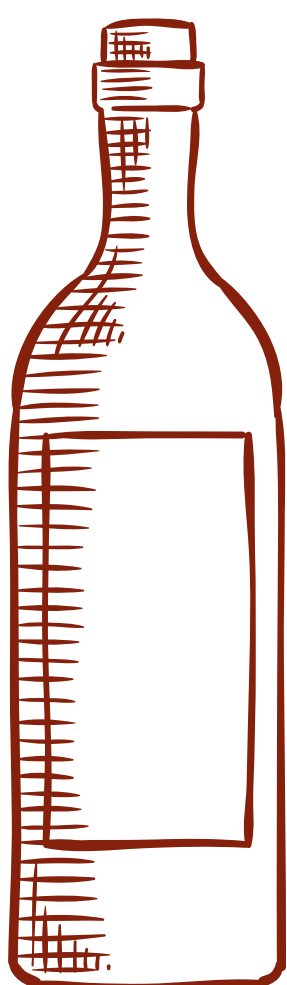
includes conversion vineyards

432ha

18%



^ 6.4%



Red Varieties

Total 1,110ha

- Pinot Noir - 890ha
- Merlot - 85ha
- Syrah - 73ha
- Cab Sav - 29ha
- Cab Franc - 16ha
- Other Red - 24ha



White Varieties

Total 1,282ha

- Sav Blanc - 786ha
- Chardonnay - 239ha
- Pinot Gris 127ha
- Riesling 79ha
- Gewurztraminer 14ha
- Other whites 56ha