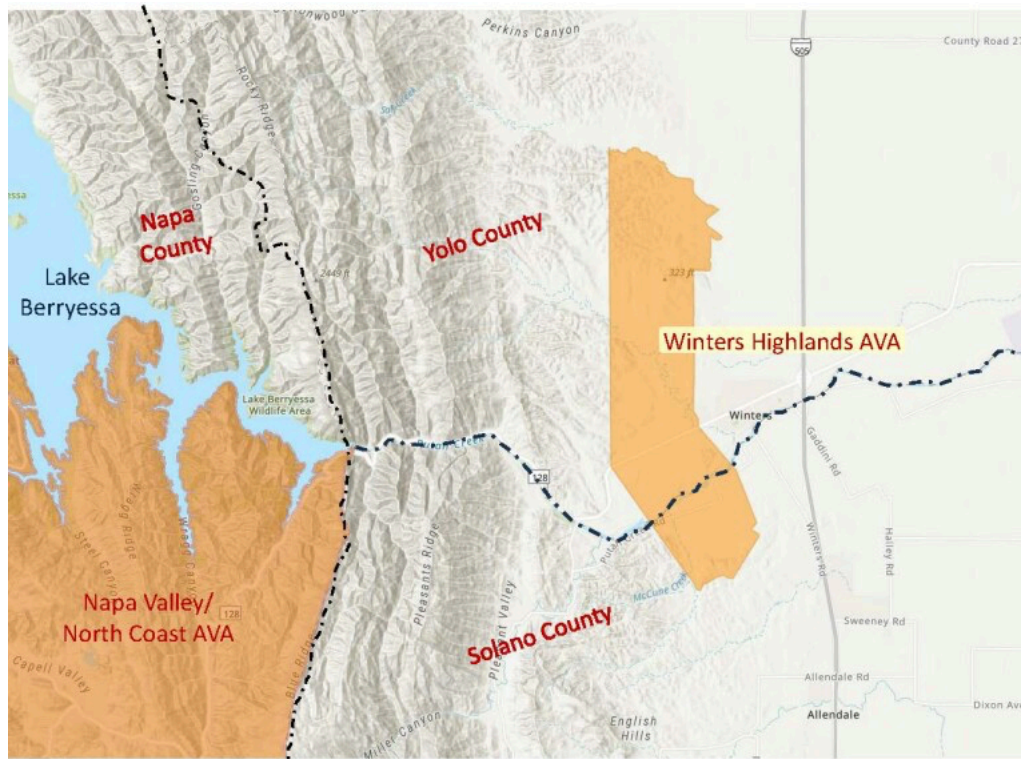


Winters Highlands AVA

On August 28 (2023), the TTB announced the approval of the Winters Highlands American Viticultural Area (AVA). The new AVA is located in portions of California's Solano and Yolo Counties.

Winters Highlands AVA is inland from the North Coast AVA and not located within any other AVA. It is situated between the California Coast Range and the Sacramento River Valley and includes the eastern most foothills of the northern Coastal Range with gentle to steep slopes at elevations ranging between 30 m and 120 m above sea level.

Soil: The soils consist mainly of well-drained clay and loam derived from sedimentary soils



Base map via the TTB AVA Explorer

Climate: Located on the eastern (inland) side of the California Coast Ranges, which provides some shelter from the cooling effect of the

Pacific Ocean. The Berryessa Gap allows for some cooling effect (particularly in the evenings. The new AVA has more degree days and is warmer overall than most of the surrounding areas; it does tend to be cooler at night

The AVA covers a total of 7,296 acres; of these, approximately 134 acres are currently planted with vineyards (another 60 acres in the planning stages).

Grapes: Petite Sirah, Tempranillo, Zinfandel, and Malbec are the red grape varieties.

White varieties include Chardonnay, Albariño, Verdejo, and Sauvignon Blanc.

There are currently three wineries. (as well as several in the planning stages).

Sept 2023